



## INVESTMENT SERVICES FOR CHARITIES

**The value of investments and the income received can fall as well as rise and investors may not get back the original amount invested.**

Please refer to the prospectus, Key Investor Information Document (KIID) and other fund documents for a full list of risks and before making any investment decisions.  
Go to [newtonim.com](http://newtonim.com).

---

# CONTENTS

3	Introducing BNY Investments Newton
4	Our investment approach
5	Pooled investment service
7	Fund information
11	Bespoke segregated portfolios
12	The team looking after your investment
13	Contact us
14	How to invest
15	Glossary

For definitions of the investment-related terms included in this document, please refer to the glossary on page 15.

# INTRODUCING BNY INVESTMENTS NEWTON



BNY Investments Newton is a trusted long-term partner to charities and is proud to have been managing assets on behalf of an extensive range of UK charities for nearly three decades.

Founded in 1978 and part of BNY Investments since 1998, we are a global firm solely focused on investment management. Powered by our multidimensional research, our approach is future-facing. It is designed to manage the realities of today’s fast-evolving investment landscape, and to resist outdated assumptions. This philosophy is applied across our equity and multi-asset strategies, which include charity-focused pooled funds and segregated portfolios.

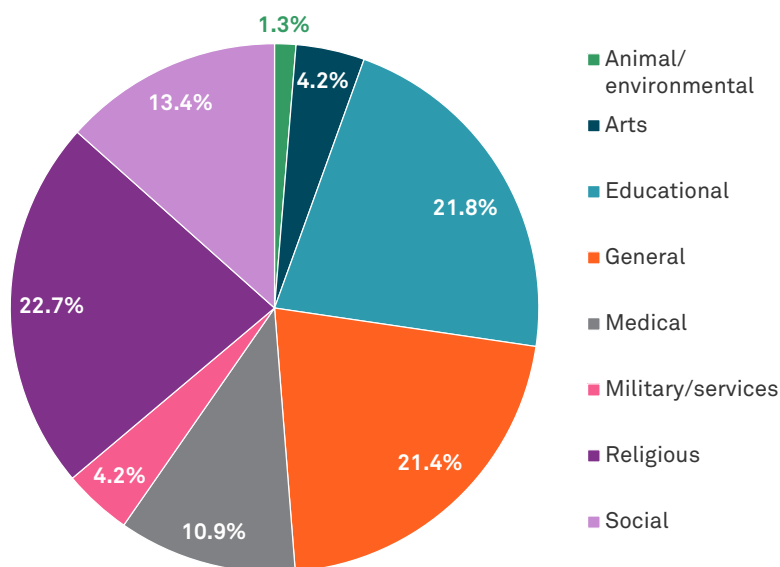
Our relationships with UK charities are overseen by our experienced multi-asset and charities investment team and supplemented by our dedicated team of client directors and support staff.

BNY brings strong parentage. It provides enterprise-scale shared services, governance, risk and compliance oversight, technology enablement, and global distribution, while giving investment autonomy to each underlying investment team. Our charity clients have the comfort of knowing that one of the world’s largest financial services providers sits behind the investment platform that is working to meet their charitable objectives.

Today, we manage assets worth £3.7 billion<sup>1</sup> on behalf of charity clients, who span a broad spectrum of charitable causes.

Newton global charity assets under management (AUM) as at 31 March 2026<sup>1</sup>

Total global charity AUM:  
**£3.7BN**



1. Assets under management (AUM) relates to the combined global charity assets under management of Newton Investment Management Limited ('NIM') and Newton Investment Management North America LLC ('NIMNA') as at 31 March 2026.

# OUR INVESTMENT APPROACH

The investment backdrop has never been more complex. To make sense of it for our clients, we believe it is vital to think holistically.

Multidimensional research is our approach to building a fuller picture of every investment opportunity. In simple terms, it means not relying on just one type of research. We combine financial analysis with insights on long-term trends, global events, company behaviour and wider risks. This broader perspective helps us uncover deeper insights and make investment decisions with greater conviction.

Underpinned by our multidimensional approach, we create our multi-asset and charities portfolios from a global investment universe. Our process has been developed by a highly experienced team and has been in place for many years.

## Multidimensional research inputs

<b>EQUITY</b>	Fundamental research to identify companies with resilient long-term earnings growth operating in attractive industries.
<b>QUANTITATIVE</b>	Data insights and analysis to complement our qualitative research to objectively understand investment characteristics and expected behaviour.
<b>FIXED INCOME</b>	Dedicated research analysts cover fixed income securities issued by sovereigns and corporations, working closely with equity and multi-asset analysts to thoroughly research companies.
<b>SPECIALITY</b>	Providing valuable insights from investigative, geopolitical, legal/regulatory, alternatives and private market research.
<b>RESPONSIBLE INVESTMENT</b>	Understanding the material risks and opportunities related to environmental or social issues that can influence the value of investments.

## Thematic research framework

Themes provide our investment team with a long-range lens through which to view global structural changes. Macro themes encapsulate major geopolitical and economic shifts, while micro themes capture the key technological, social and environmental trends which we believe will present investment opportunities.



Analysis of themes may vary depending on the type of security, investment rationale and investment strategy. Newton will make investment decisions that are not based on themes and may conclude that other attributes of an investment outweigh the thematic structure the security has been assigned to. Newton manages a variety of investment strategies. How environmental, social and governance (ESG) analysis is integrated into Newton's strategies depends on the asset classes and/or the particular strategy involved. ESG can be one of many inputs into the fundamental analysis. Newton will make investment decisions that are not based solely on ESG analysis. Other attributes of an investment may outweigh ESG analysis when making investment decisions.

# POOLED INVESTMENT SERVICE

A growing number of charities are opting for a pooled investment approach owing to, among other reasons, the ease of administration, the simple process of adding or removing money, and lower management costs.

Our pooled fund solutions harness the investment experience of our charities team. They are designed to meet a broad range of investor objectives, including those focused on long-term income and growth generation, as well as responsible investing.

We offer a suite of charity-specific multi-asset funds which seek to grow the real value of charities' assets over the long term. They are actively managed, which means our investment team has discretion over the selection of investments, subject to the investment objective and policies as disclosed in the Prospectus. All our charity funds exclude investment in companies involved in the manufacture of controversial weapons. They also do not invest in companies that derive more than 10% of their turnover from tobacco production. The funds have been designed to offer several benefits for charity investors.

## ACTIVE MULTI-ASSET SOLUTIONS

Our charity-specific pooled funds are multi-asset solutions – directly investing across equities, bonds, alternatives and cash. This means clients have access to a broad set of asset classes through one fund and can benefit from its diversification effect.



## CHARITY AUTHORISED INVESTMENT FUND STRUCTURE

Our charity-specific funds have been set up as non-UCITS retail schemes (NURS) within a Charity Authorised Investment Fund (CAIF) structure. The CAIF is a dual-regulated vehicle and a registered charity. It is subject to ongoing oversight by the Charity Commission in addition to the Financial Conduct Authority (FCA). Being formally registered as a charity means that any income or gains distributed by the CAIF flow through to participating charities without being subject to further tax. In addition, the funds' annual management charges are not currently subject to VAT.



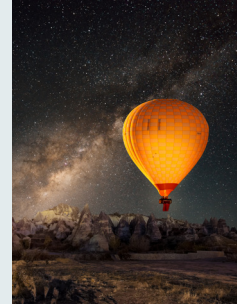
The funds invest in international markets. This means they are exposed to changes in currency rates, which could affect the value of the funds.

Investments can be affected by interest rates and inflation trends, which may negatively affect the value of the funds.

Tax treatment will depend on individual circumstances and may change in the future.

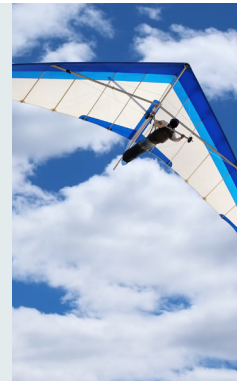
## ABILITY FOR SMOOTHED DISTRIBUTION UNIT CLASSES

In the CAIF structure, the funds have the option for an income smoothing unit class feature. This enables the funds to hold back income from one accounting period to another and pay out previously held income, allowing for the distribution of a steady stream of income.



## PERFORMANCE BENCHMARK ALIGNED TO CHARITABLE INVESTORS' NEEDS

As a primary performance benchmark, all our charity funds use inflation (as measured by the Consumer Price Index) plus 4% per annum (after fees have been deducted). We believe this aligns with charitable investors' needs and objectives to outperform inflation over the longer term.



# NEWTON GROWTH AND INCOME FUND FOR CHARITIES (CAIF)

A straightforward and tax-efficient solution for charity investors who wish to achieve a balance between capital growth and income.

## Fund objective and benchmark

For definitions of the indices mentioned on this page, please see page 10.

### Investment objective

The Fund aims to generate capital growth and income growth in excess of inflation (as measured by the Consumer Price Index) plus 4% per annum (after fees have been deducted) over the long term (rolling 10-year periods). There is no guarantee that the Fund will achieve its investment objective or that a positive return will be delivered over any time period and capital is at risk.

### Benchmark

The Newton Growth and Income Fund for Charities (CAIF) uses the following two measures as appropriate benchmarks for comparison:

**Primary benchmark:** Over rolling 10-year periods (meaning a period of 10 years, no matter which day you start on), the Fund will measure its performance after fees against inflation (as measured by the Consumer Price Index) plus 4% per annum. This comparator is considered appropriate as it is representative of the target return of the Fund.

**Secondary benchmark:** As a secondary comparator, the Fund will measure its performance against a mixed (composite) index which comprises 55% FTSE World ex UK TR Index, 20% FTSE All-Share TR Index, 20% FTSE Actuaries UK Conventional Gilts All Stocks TR Index and 5% 7-Day Compounded SONIA. This comparator is considered appropriate because it includes a broad representation of the asset classes, sectors and geographical areas in which the Fund predominantly invests.

As an actively managed Fund, the Investment Manager can make investment decisions (whether to buy, sell or hold assets) at its discretion. These decisions are made in line with the Fund's objective and investment policy as disclosed in the Prospectus.

## Fund charges

### Sterling Accumulation share class

#### One-off charges taken before or after you invest

Below are the maximum amounts that might be taken out of your money before it is invested and before the proceeds of your investment are paid out.

	%	Per £1,000 invested
Entry charge	0.00	-
Exit charge	None	-

#### Charges taken from the Fund over a year

So long as you hold an investment in the Fund you will pay the ongoing charges, which cover the costs of running the Fund. Ongoing charges are deducted from the Fund and, as such, are reflected in its performance. The below ongoing charges are an estimate. An estimate is being used due to the Fund's recent launch on 16 May 2026. Ongoing charges may vary from year to year.

	%	Per £1,000 invested
Ongoing charges	0.65	£6.50

## Risk and reward profile

### Sterling Accumulation share class

#### Risk and reward indicator



As this Fund has less than five years' performance data available, the risk and reward indicator is based on simulated volatility. The simulated volatility shows how much the value of the Fund might have fluctuated over the last five years, based on the historic data of a suitable proxy.

The indicator is not a guide to the future risk and reward rating of the Fund. The rating shown is not a target or guarantee and may shift over time. Even the lowest rating of 1 does not mean a risk-free investment.

This Fund is rated 4 because its simulated historical value has shown moderate volatility. With a Fund rating of 4, investors have a moderate risk of losing money but the chance for gains is also moderate.

Tax treatment will depend on individual circumstances and may change in the future.

# NEWTON RESPONSIBLE MULTI-ASSET FUND FOR CHARITIES

A straightforward, tax-efficient solution for charity investors who wish to achieve a balance between capital growth and income by investing in securities that demonstrate attractive investment attributes and sustainable business or operating practices.

## Fund objective and benchmark

For definitions of the indices mentioned on this page, please see page 10.

### Investment objective

The Fund aims to achieve income and capital growth in excess of inflation (as measured by the Consumer Price Index) plus 4% per annum (after fees have been deducted) over the long term (rolling 10-year periods). There is no guarantee that the Fund will achieve its investment objective or that a positive return will be delivered over any time period and capital is at risk.

### Benchmark

The Newton Responsible Multi-Asset Fund for Charities uses the following two measures as appropriate benchmarks for comparison:

**Primary benchmark:** Over rolling 10-year periods (meaning a period of 10 years, no matter which day you start on), the Fund will measure its performance after fees against inflation (as measured by the Consumer Price Index) plus 4% per annum. This comparator is considered appropriate as it is representative of the target return of the Fund.

**Secondary benchmark:** As a secondary comparator, the Fund will measure its performance against the ARC Steady Growth peer group benchmark. This comparator is considered appropriate as it is representative of the Fund's peer group and its risk profile.

As an actively managed Fund, the Investment Manager can make investment decisions (whether to buy, sell or hold assets) at its discretion. These decisions are made in line with the Fund's objective and investment policy as disclosed in the Prospectus.

## Fund sustainability characteristics

The Fund is subject to a set of minimum exclusions referred to as 'sustainable investment restrictions'. These restrictions include companies involved in or that generate a material proportion of revenues from activities that are deemed to be harmful from an environmental or social perspective.

The Fund does not seek a specific sustainability outcome as part of its investment objective, but in pursuing its investment objective a

minimum of 70% of holdings will be invested in securities assessed to have sustainability characteristics, in accordance with the Newton sustainable investment framework. This Fund does not have a UK sustainable investment label.

Further information on the Fund's sustainability characteristics is available in the [UK SDR Consumer Facing Disclosure \(CFD\)](#).

## Fund charges

### Sterling Accumulation share class

#### One-off charges taken before or after you invest

Below are the maximum amounts that might be taken out of your money before it is invested and before the proceeds of your investment are paid out.

	%	Per £1,000 invested
Entry charge	0.00	-
Exit charge	None	-

#### Charges taken from the Fund over a year

So long as you hold an investment in the Fund you will pay the ongoing charges, which cover the costs of running the Fund. Ongoing charges are deducted from the Fund and, as such, are reflected in its performance. The below ongoing charges are an estimate. An estimate is being used due to the Fund's recent launch on 16 May 2026. Ongoing charges may vary from year to year.

	%	Per £1,000 invested
Ongoing charges	0.65	£6.50

## Risk and reward profile

### Sterling Accumulation share class

#### Risk and reward indicator



As this Fund has less than five years' performance data available, the risk and reward indicator is based on simulated volatility. The simulated volatility shows how much the value of the Fund might have fluctuated over the last five years, based on the historic data of a suitable proxy.

The indicator is not a guide to the future risk and reward rating of the Fund. The rating shown is not a target or guarantee and may shift over time. Even the lowest rating of 1 does not mean a risk-free investment.

This Fund is rated 4 because its simulated historical value has shown moderate volatility. With a Fund rating of 4, investors have a moderate risk of losing money but the chance for gains is also moderate.

**The investment policy for this Fund places restrictions on its exposure to certain sectors or types of investments to reflect its responsible investing approach. The Fund's performance may be negatively impacted due to these restrictions in comparison to funds which do not have these restrictions.**

**Tax treatment will depend on individual circumstances and may change in the future.**

# NEWTON CATHOLIC VALUES FUND FOR CHARITIES

A straightforward solution for Catholic investors aiming to achieve inflation-beating growth while adhering to faith-consistent exclusions.

## Fund objective and benchmark

For definitions of the indices mentioned on this page, please see page 10.

### Investment objective

The Fund aims to achieve income and capital growth in excess of inflation (as measured by the Consumer Price Index) plus 4% per annum (after fees have been deducted) over the long term (rolling 5-year periods) while adhering to the Fund's Catholic faith-consistent exclusions policy. There is no guarantee that the Fund will achieve its investment objective or that a positive return will be delivered over any time period and capital is at risk.

### Benchmark

The Newton Catholic Values Fund for Charities uses the following two measures as appropriate benchmarks for comparison:

**Primary benchmark:** Over rolling 5-year periods (meaning a period of 5 years, no matter which day you start on), the Fund will measure its performance after fees against inflation (as measured by the Consumer Price Index) plus 4% per annum. This comparator is considered appropriate as, while it does not take Catholic values criteria into account, it is representative of the target return of the Fund.

**Secondary benchmark:** As a secondary comparator, the Fund will measure its performance against the ARC Steady Growth peer group benchmark. This comparator is considered appropriate as, while it does not take Catholic values criteria into account, it is representative of the Fund's peer group and its risk profile.

As an actively managed Fund, the Investment Manager can make investment decisions (whether to buy, sell or hold assets) at its discretion. These decisions are made in line with the Fund's objective and investment policy as disclosed in the Prospectus.

## Catholic faith-consistent exclusions

The Fund follows Catholic faith-consistent exclusions to:

- Systematically integrate Catholic Social Teaching into the investment process and avoid investing in issuers whose activities contradict the Catholic faith community's teachings, such as those reflected in the Mensuram Bonam and Laudato Si
- Exclude direct investment in issuers that derive revenues from the Catholic faith-consistent excluded activities beyond the investment manager's predetermined thresholds

## Fund charges

### Sterling Income share class

#### One-off charges taken before or after you invest

Below are the maximum amounts that might be taken out of your money before it is invested and before the proceeds of your investment are paid out.

	%	Per £1,000 invested
Entry charge	0.00	-
Exit charge	None	-

#### Charges taken from the Fund over a year

So long as you hold an investment in the Fund you will pay the ongoing charges, which cover the costs of running the Fund. Ongoing charges are deducted from the Fund and, as such, are reflected in its performance. The below ongoing charges are an estimate. An estimate is being used due to the Fund's recent launch on 12 May 2025. Ongoing charges may vary from year to year.

	%	Per £1,000 invested
Ongoing charges	0.70	£7.00

## Risk and reward profile

### Sterling Income share class

#### Risk and reward indicator



As this Fund has less than five years' performance data available, the risk and reward indicator is based on simulated volatility. The simulated volatility shows how much the value of the Fund might have fluctuated over the last five years, based on the historic data of a suitable proxy.

The indicator is not a guide to the future risk and reward rating of the Fund. The rating shown is not a target or guarantee and may shift over time. Even the lowest rating of 1 does not mean a risk-free investment.

This Fund is rated 4 because its simulated historical value has shown moderate volatility. With a Fund rating of 4, investors have a moderate risk of losing money but the chance for gains is also moderate.

The Fund follows a faith-consistent exclusions approach, which may cause it to perform differently than funds that have a similar objective but which do not follow faith-consistent exclusions when selecting securities.

---

# INDEX DEFINITIONS

## **ARC Steady Growth peer group benchmark**

The ARC Steady Growth peer group benchmark is specifically designed to be used by charity trustees and advisers in assessing the performance of charity investment portfolios.

## **Consumer Price Index (CPI)**

The Consumer Price Index (CPI) is the main measure of inflation in the UK and tracks the average change from month to month in the prices of goods and services purchased by most UK households.

## **FTSE Actuaries UK Conventional Gilts All Stocks TR Index**

The FTSE Actuaries UK Conventional Gilts All Stocks Total Return (TR) Index measures the performance of sterling-denominated UK government fixed income securities (gilts).

## **FTSE All-Share TR Index**

The FTSE All-Share Total Return (TR) Index tracks the performance of company shares listed on the London Stock Exchange and is representative of the UK equity market.

## **FTSE World ex UK TR Index**

The FTSE World ex UK Total Return (TR) Index represents the performance of company shares from developed and advanced emerging markets excluding the UK.

## **SONIA**

SONIA (Sterling Overnight Index Average) is the average interest rate banks pay to borrow pounds sterling overnight and is used as a proxy for the return on cash deposits. The 7-day rate is calculated by compounding the daily SONIA rates throughout the previous 7-day period.

# BESPOKE SEGREGATED PORTFOLIOS

For clients with more complex requirements, requiring tailored ethical screening and/or particular asset-allocation solutions or income management, we manage segregated investment portfolios.

We will discuss your investment needs with you in order to understand your aims, objectives, requirements and time horizon. If your charity has ethical policies in place we are able to allocate assets in your portfolio to adhere to your principles.

Segregated portfolios are managed under a discretionary service. This means that we take on responsibility for buying and selling holdings within the portfolio.

**Key features of our segregated portfolio service include:**



# THE TEAM LOOKING AFTER YOUR INVESTMENT

Newton multi-asset and charities investment leadership team and multidimensional research inputs

## Multi-Asset & Charities investment team:

### Multidimensional research inputs

- EQUITY**
- QUANTITATIVE**
- FIXED INCOME**
- SPECIALITY**
- RESPONSIBLE INVESTMENT**

### Formal interactions and decision making

- Morning investment meeting
- Regular asset class and sector reviews
- Weekly multi-asset meeting
- Focused portfolio management team decision making



**Paul Flood**  
Head of Multi-Asset & Charities  
Joined Newton: 2004  
Joined industry: 2004

Paul is Head of Multi-Asset and Charities at Newton, and is lead manager of several multi-asset strategies. He also provides leadership and analysis on asset allocation, derivatives and convertible bonds for the wider firm.



**Bhavin Shah**  
Portfolio Manager  
Joined Newton: 2011  
Joined industry: 2004

Bhavin is co-lead manager on numerous multi-asset accounts at Newton. In addition to portfolio management responsibilities, Bhavin is a member of the multi-asset Investment Risk Oversight Group.



**Simon Nichols**  
Portfolio Manager  
Joined Newton: 2001  
Joined industry: 1995

Simon is a portfolio manager on the multi-asset and charities team responsible for managing both global equity and multi-asset portfolios. He was responsible for research into a number of global industrial sectors before moving to portfolio management.



**Michael Spinks**  
Portfolio Manager  
Joined Newton: 2024  
Joined industry: 1996

Michael is a senior portfolio manager on the multi-asset and charities team with joint investment responsibilities for several UK charity and specialist institutional portfolios. Outside of work, Michael advises paediatric care charities.



**Janice Kim**  
Portfolio Manager  
Joined Newton: 2022  
Joined industry: 2003

Janice is a portfolio manager on Newton's multi-asset and charities team. She brings a global perspective and deep analytical expertise to her role, shaped by her previous experience as an investment analyst.



**Nancy Last**  
Senior Portfolio Analyst  
Joined Newton: 2017  
Joined industry: 2017

Nancy is a senior portfolio analyst working in Newton's multi-asset and charities team. She initially worked in business control before moving into the portfolio implementation team.

---

# CONTACT US

## Client directors



**David Moylett**  
Client director

T: 020 7163 3795  
E: david.moylett@bny.com



**Erika An**  
Client director

T: 020 7163 1425  
E: erika.an@bny.com

## Client service representatives



**Sam Oxley**  
Head of client services  
UK, EMEA & APAC

T: 020 7163 3327  
E: sam.oxley@bny.com



**Neil Needham**  
Manager  
Institutional client services

T: 020 7163 2332  
E: neil.needham@bny.com

---

# HOW TO INVEST

## **Pooled fund investment service**

Please complete an application form and send it, together with your initial investment, to the address below. The units are purchased on a daily basis and a contract note will be sent within one working day.

BNY Mellon Fund Managers Limited  
Client Service Centre, PO Box 366, Darlington, DL1 9RF

Application forms are available from: [newtonim.com/uk-charities/strategies](https://newtonim.com/uk-charities/strategies)  
or by contacting the Newton charity team at:

E: [newton.charities@bny.com](mailto:newton.charities@bny.com)

## **Bespoke segregated portfolio service**

If you wish to find out more information on our segregated service, please contact the Newton charity team at:

E: [newton.charities@bny.com](mailto:newton.charities@bny.com)

## **Enquiries and further information**

For more information on Newton's investment services for charities, a copy of scheme particulars, annual and interim reports or fund factsheets, please contact us at:

E: [newton.charities@bny.com](mailto:newton.charities@bny.com)  
[newtonim.com/uk-charities](https://newtonim.com/uk-charities)

**The value of investments and the income received can fall as well as rise and investors may not get back the original amount invested.**

---

# GLOSSARY

**ACTIVE MANAGEMENT:** A process whereby an investment professional actively makes buy, hold and sell decisions and aims to outperform the overall market.

**ALTERNATIVES:** An alternative is a financial asset that does not fall into one of the conventional investment categories, such as equities or bonds.

**ANNUAL MANAGEMENT CHARGE (AMC):** An ongoing fee paid to the management company for managing an investment, usually charged as a percentage of the investment.

**ASSETS:** In this context, investments held in a portfolio, for example stocks, bonds, property and cash.

**ASSET ALLOCATION:** An investment strategy that aims to balance risk and reward by apportioning a portfolio's assets according to an individual's goals, risk tolerance, and investment horizon.

**ASSET CLASS:** A grouping of investments that exhibit similar characteristics and are subject to the same laws and regulations.

**BENCHMARK:** A baseline for comparison against which a fund can be measured.

**BOND(S):** A loan of money by an investor to a company or government for a stated period of time in exchange for a fixed interest rate payment and the repayment of the initial amount at its conclusion.

**CAPITAL GROWTH:** When the current value of an investment is greater than the initial amount invested.

**DIVERSIFIED/DIVERSIFICATION/DIVERSIFIERS:** Investing in a variety of companies or financial instruments, which typically perform differently from one another.

**ENVIRONMENTAL, SOCIAL AND GOVERNANCE (ESG):** Elements or factors of responsible investment consisting of a set of standards through which a company's operations can be screened prior to investing.

**EQUITY/EQUITIES:** Shares issued by a company, representing an ownership interest.

**FIXED INCOME:** Broadly refers to those types of investment security that pay investors fixed interest or dividend payments until their maturity date.

**FUNDAMENTALS:** A basic principle, rule, law, or the like, that serves as the groundwork of a system. A company's fundamentals are factors such as its business model, earnings, balance sheet and debt. Economic fundamentals are factors such as inflation, employment, economic growth.

**GILT(S):** Fixed income security issued by the UK government.

**INDEX/INDICES:** A portfolio of investments representing a particular market or a portion of it. For example: The FTSE 100 is an index of the shares of the 100 largest companies on the London Stock Exchange.

**INFLATION/INFLATIONARY:** The rate of increase in the cost of living. Inflation is usually quoted as an annual percentage, comparing the average price this month with the same month a year earlier.

**MACROECONOMIC:** The performance and behaviour of an economy, including factors such as economic output, unemployment, inflation and investment.

**MULTI-ASSET:** An investment containing more than one asset class, such as cash, equity or bond.

**ONGOING CHARGE FIGURE (OCF):** The amount an investor will pay for the service provided by a fund. The OCF is made up of the manager's fees along with other costs, such as administration. It's meant to be used as a standardised method to compare the costs of funds.

**PORTFOLIO:** A collection of investments.

**RESPONSIBLE INVESTING:** The overall strategy and practice of stewardship and the incorporation and analysis of the financial implications of ESG issues into the investment decision-making process.

**RETURN(S)/RETURNED:** The gain or loss from an investment over a stated period of time – expressed in either percentage or cash terms.

**SECTORS:** An area of the economy in which businesses share the same or related business activity, product, or service.

**SECURITY/SECURITIES:** A tradable financial asset such as a share in a company or a fixed income security also known as a bond.

**SHARE(S):** Also known as equity, is a security representing the ownership of a fraction of a company listed on the stock market.

**STOCK:** Also known as equity, is a security that represents the ownership of a fraction of the issuing corporation.

**The value of investments and the income received can fall as well as rise and investors may not get back the original amount invested.**

**Please refer to the prospectus, Key Investor Information Document (KIID) and other fund documents for a full list of risks and before making any investment decisions. Go to [newtonim.com](https://newtonim.com).**

**If you are unsure which type of investment is right for you, please contact a financial adviser.**

### **Important information**

**This is a financial promotion.**

Any views and opinions are not investment advice or a research recommendation.

Calls may be recorded. For more information visit our [Privacy Policy](#).

BNY is the corporate brand of The Bank of New York Mellon Corporation and may be used to reference the corporation as a whole and/or its various subsidiaries generally.

BNY Charity Authorised Investment Fund is a Charity Authorised Investment Fund constituted as umbrella unit trust scheme, with segregated liability between sub-funds, authorised in the UK by the Financial Conduct Authority as a non-UCITS retail scheme. The Manager is BNY Mellon Fund Managers Limited (BNY MFML), incorporated in England and Wales: No. 1998251. Registered address: BNY Mellon Centre, 160 Queen Victoria Street, London EC4V 4LA. Authorised and regulated by the Financial Conduct Authority.

**Issued in the UK** by BNY Mellon Investment Management EMEA Limited, BNY Mellon Centre, 160 Queen Victoria Street, London EC4V 4LA. Registered in England No. 1118580. Authorised and regulated by the Financial Conduct Authority.

This material may be distributed by Newton Investment Management Limited in the UK to retail investors. Newton Investment Management Limited, 160 Queen Victoria Street, London EC4V 4LA. Registered in England No. 01371973. Authorised and regulated by the Financial Conduct Authority.

Document ID: 3339650. Expiry 16 May 2027.